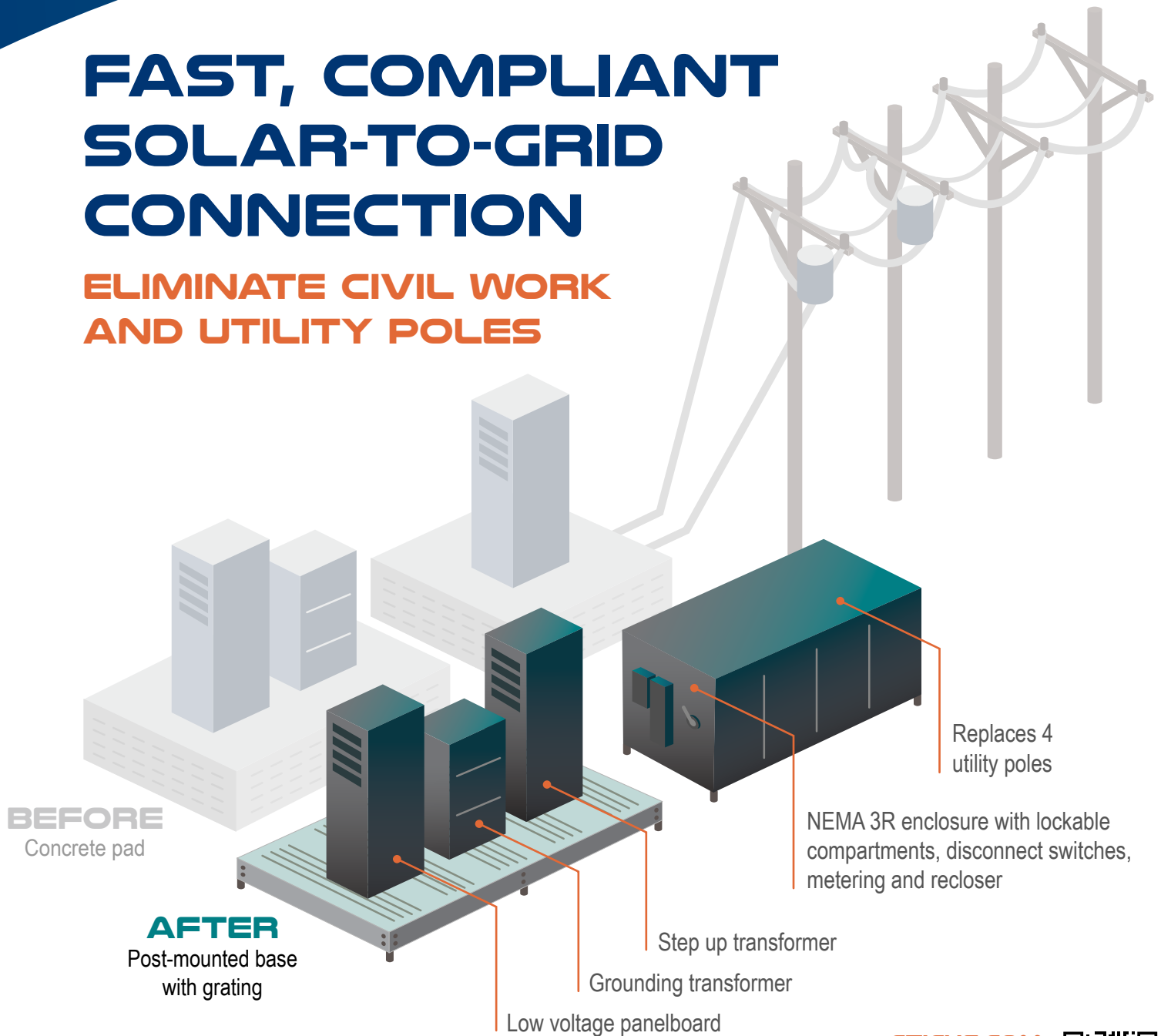


# FAST, COMPLIANT SOLAR-TO-GRID CONNECTION

**ELIMINATE CIVIL WORK  
AND UTILITY POLES**



**CTICUS.COM**  
**518.899.9700**  
**BALLSTON SPA, NY**





ISO 9001: 2015 CERTIFIED

## CAPABILITIES

- 54,000 sq ft in Ballston Spa, NY
- Global shipping and supply chain experts
- Engineering staff with CFD, FEA and 3D modeling
- 40 ton crane capacity with 25 ft under the hook
- Global compliance expertise:
  - NEC, UL, FM
  - CE, ATEX, IECex
  - CSA
  - NFPA
- Clean assembly
- Supply chain and parts warehouse with 1000s of SKUs

## MISSION CRITICAL APPLICATIONS

- Fire Suppression (Water Mist, CO<sub>2</sub>, FM 200)
- Erooms (Control, Excitation and Battery Compartments)
- Fuel Electrification
- Custom High Temperature/ Hazardous Area Cables
- Flow Meters and Packaged Instrumentation
- Fuel and Steam Strainers
- Specialty Valves (Stop and Control)
- Battery Charger and Custom DC Starters
- Environmental Enclosures (HRSG Drum End and Penthouses, BESS)
- Blowers and Heaters
- Kitting of Parts for OEMs

## GLOBAL MANUFACTURING PARTNERS

